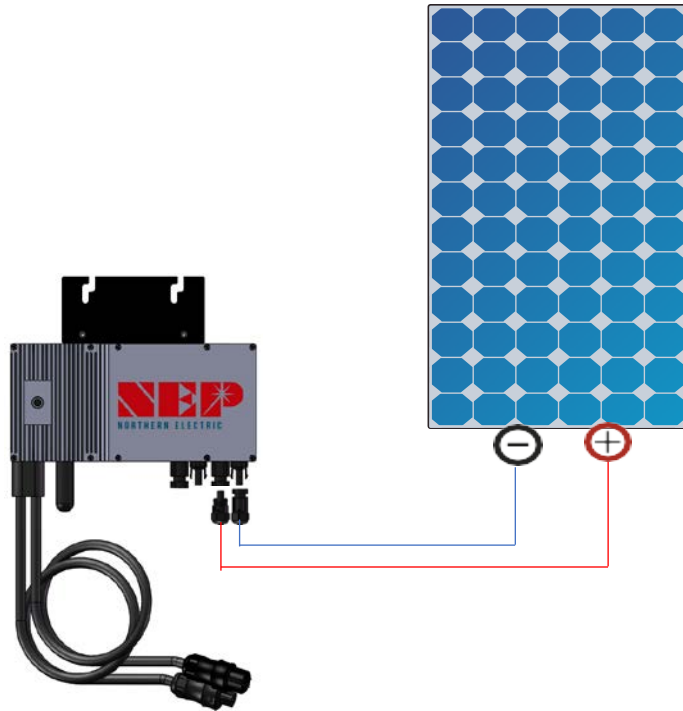


Configuring BDM WiFi

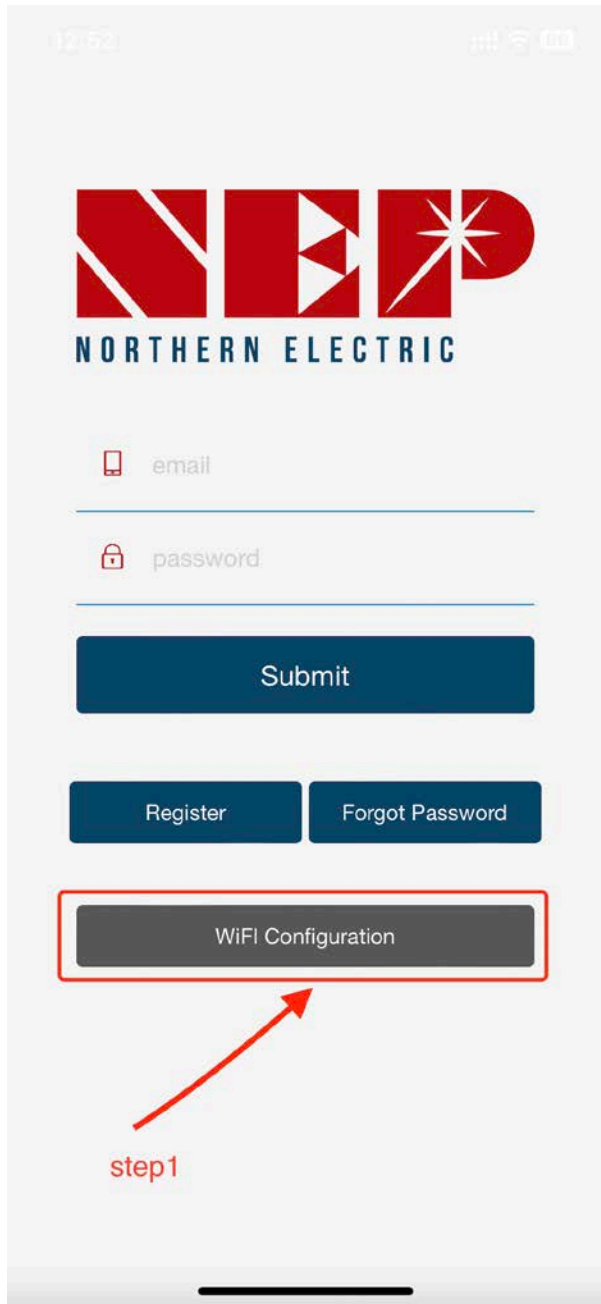
May 14, 2023

Typical Connection Scheme

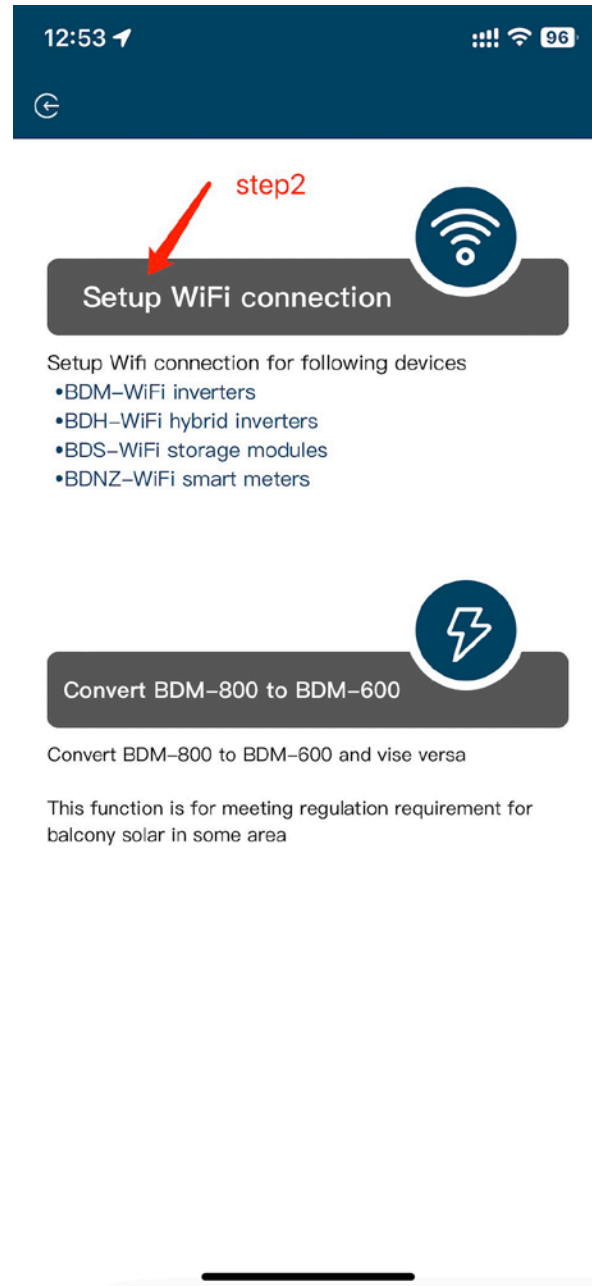


Inverter Barcode & SN





step1: Select WiFi Configuration



Step 2a: Enter WiFi configuration

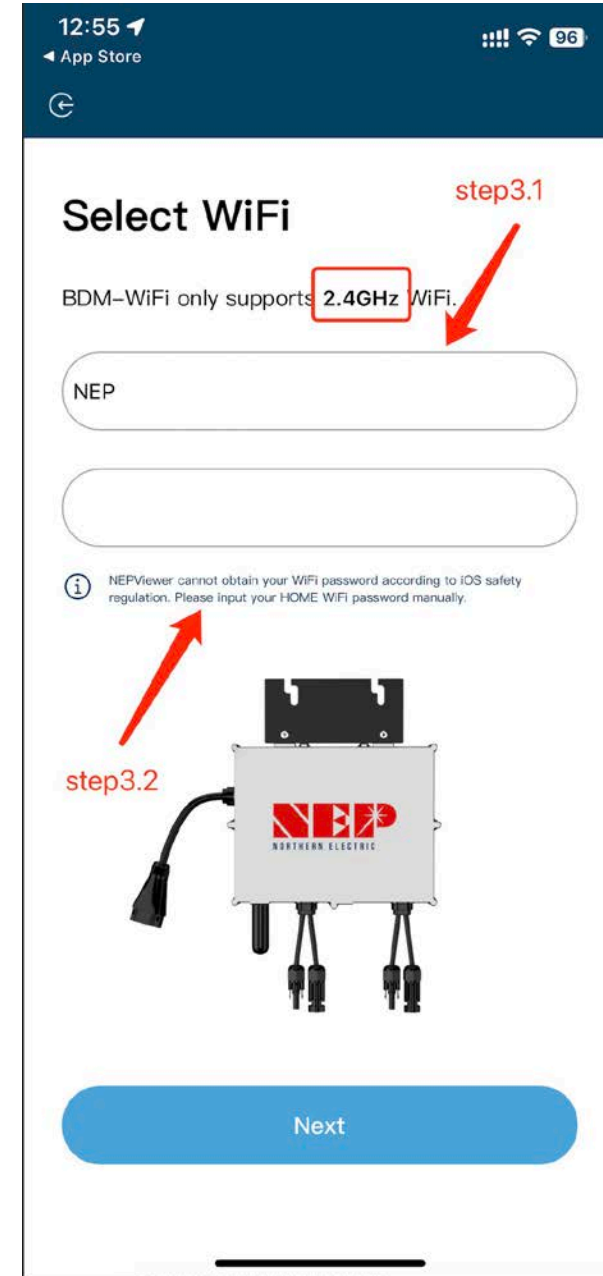
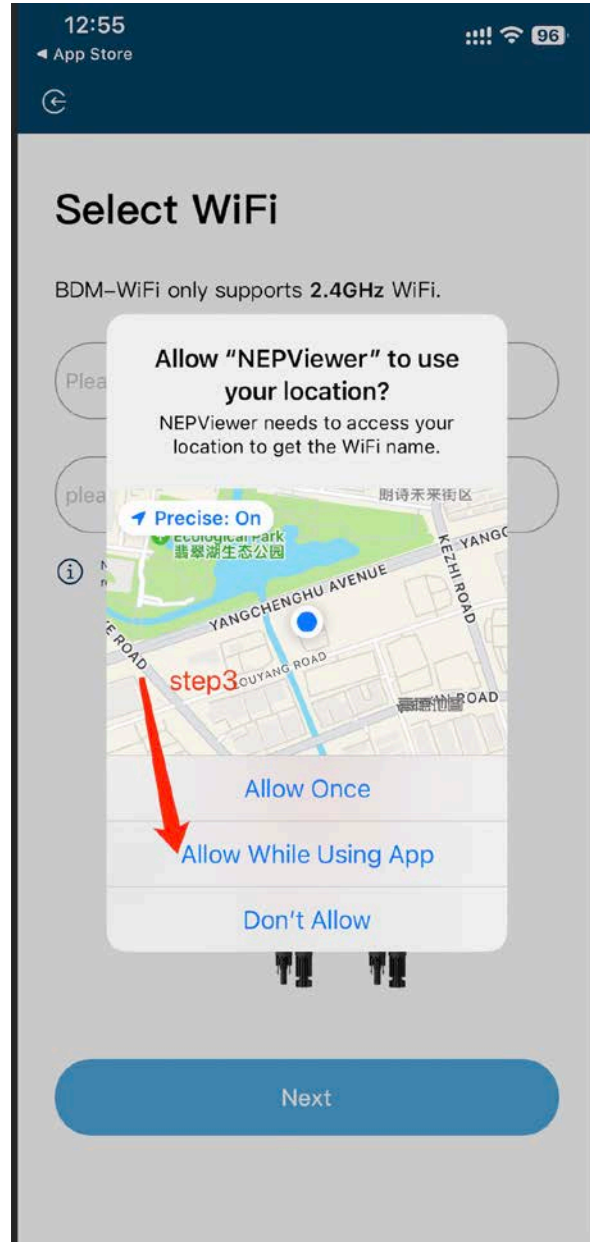
Step 2b: Convert BDM-800 to BDM-600

(only for inverter SN starts with 33c)

step3: Click **Allow** to obtain geographic location permission (only pops up when opening the app for the first time)

step3.1: Home WiFi network **SSID**

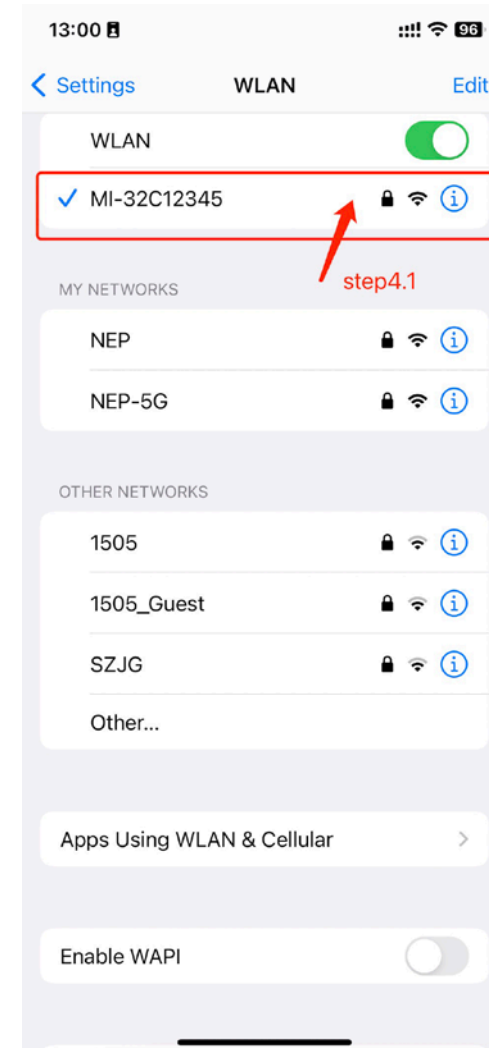
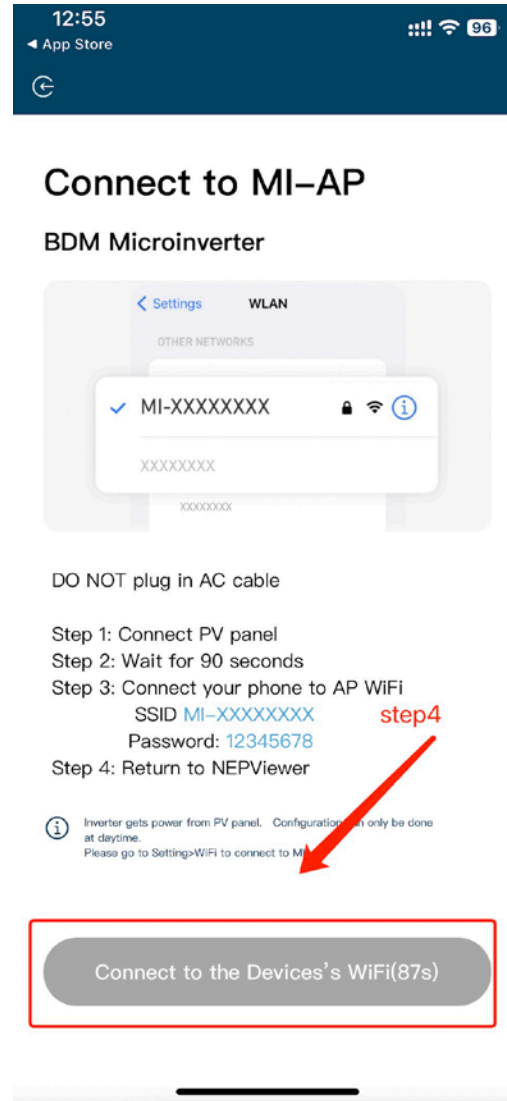
step3.2: Home WiFi network **password**



step4: Plug BDM-WiFi into PV at daytime, and **disconnect AC**

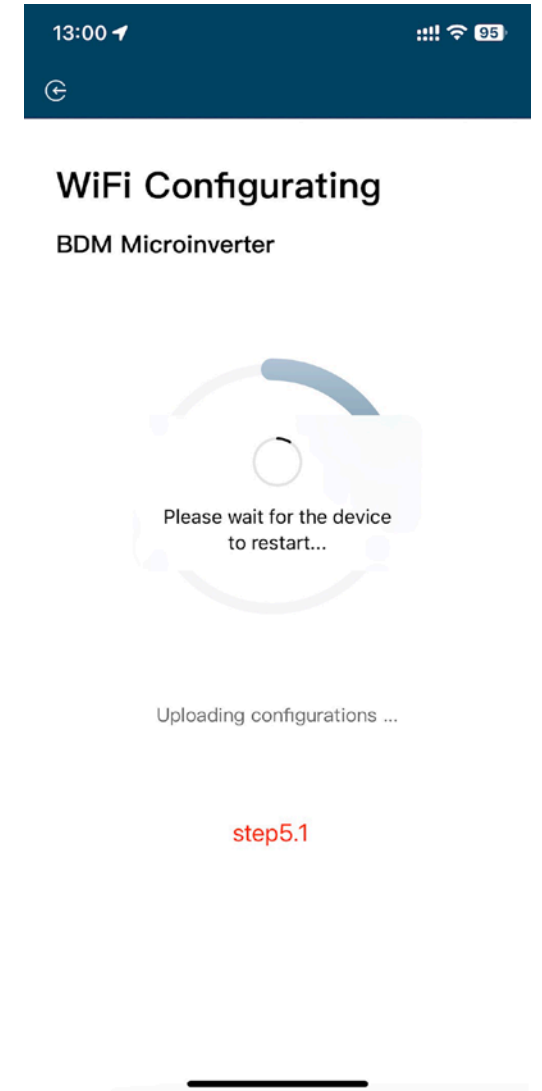
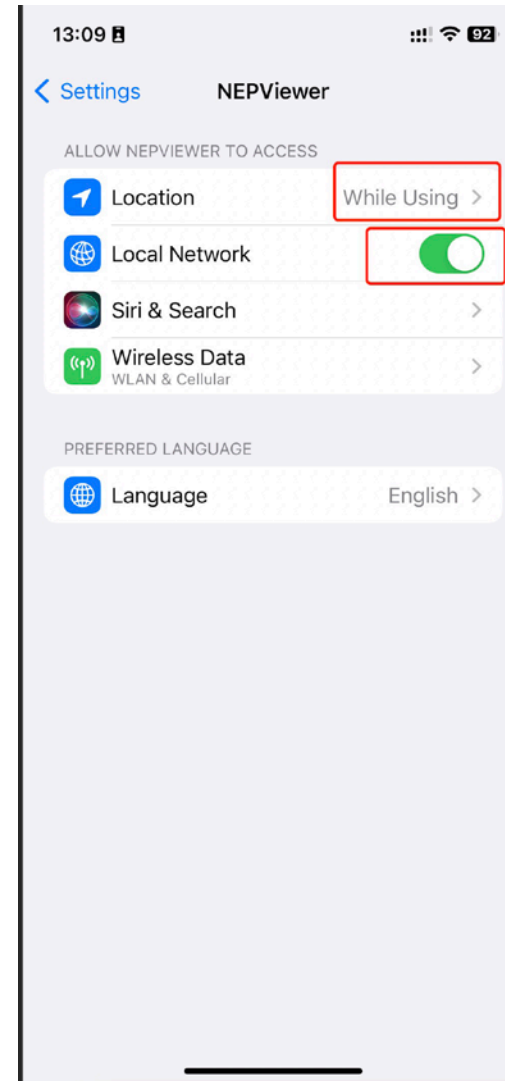
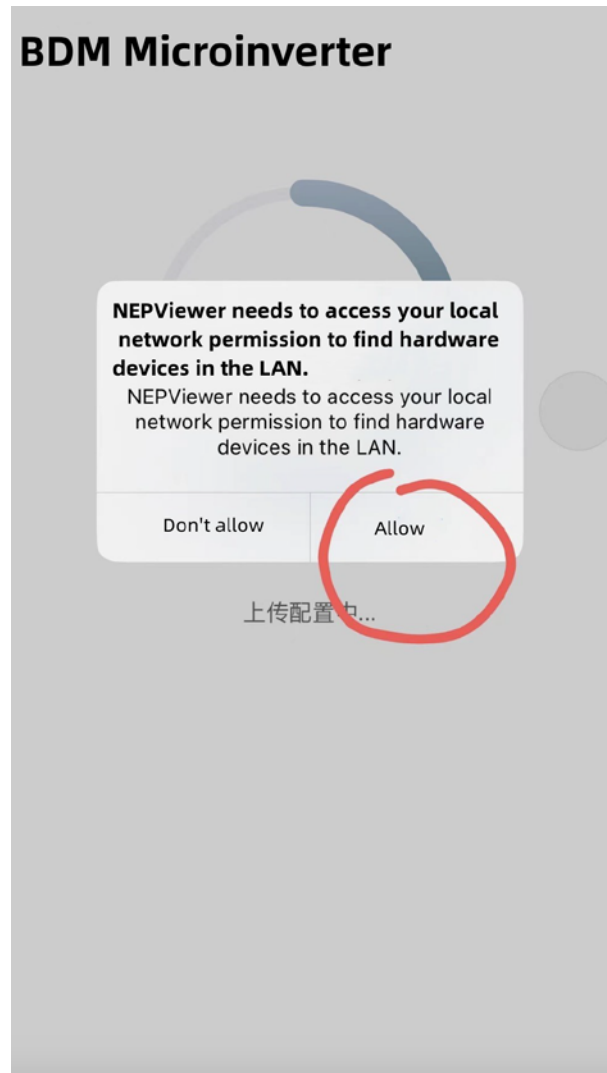
step4.1: Connect micro inverter hotspot
hotspot SSID: MI-XXXXXXXX
Password: 12345678

step4.2: Return to NEPViewer app



step5: Allow connection to local network (A window may pop up when the app is opened for the first time. You may check permissions going to phone settings - NEPViewe)

step5.1 Wait for the inverter to complete configuration and restart

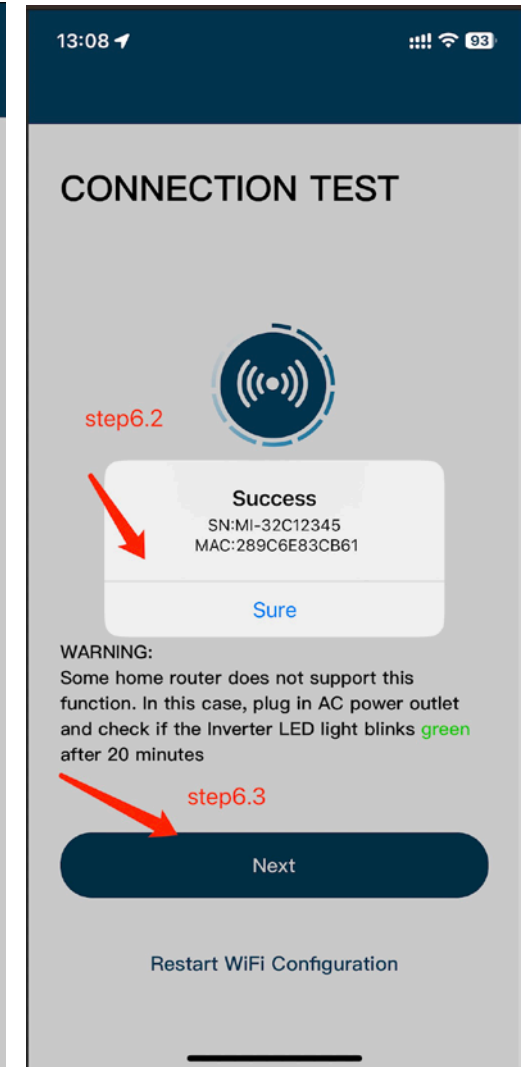
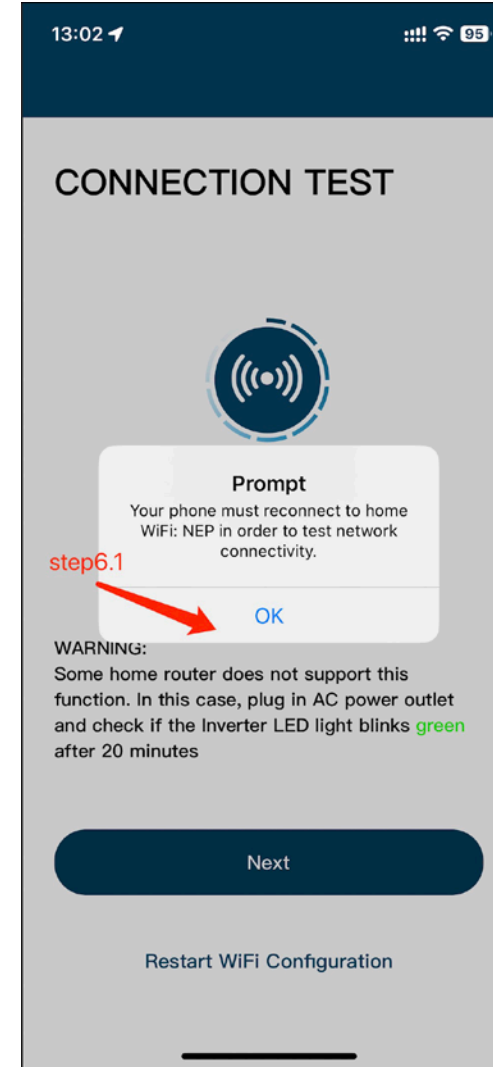


step6: Click the button to check the connectivity (Phone is connected to the same home WiFi)

step6.1: Confirm phone is connected to the home WiFi (**this step may not appear**)

step6.2: click **Sure**,

step6.3: click **Next**



step7: Click done, the WiFi configuration has been completed at this time

